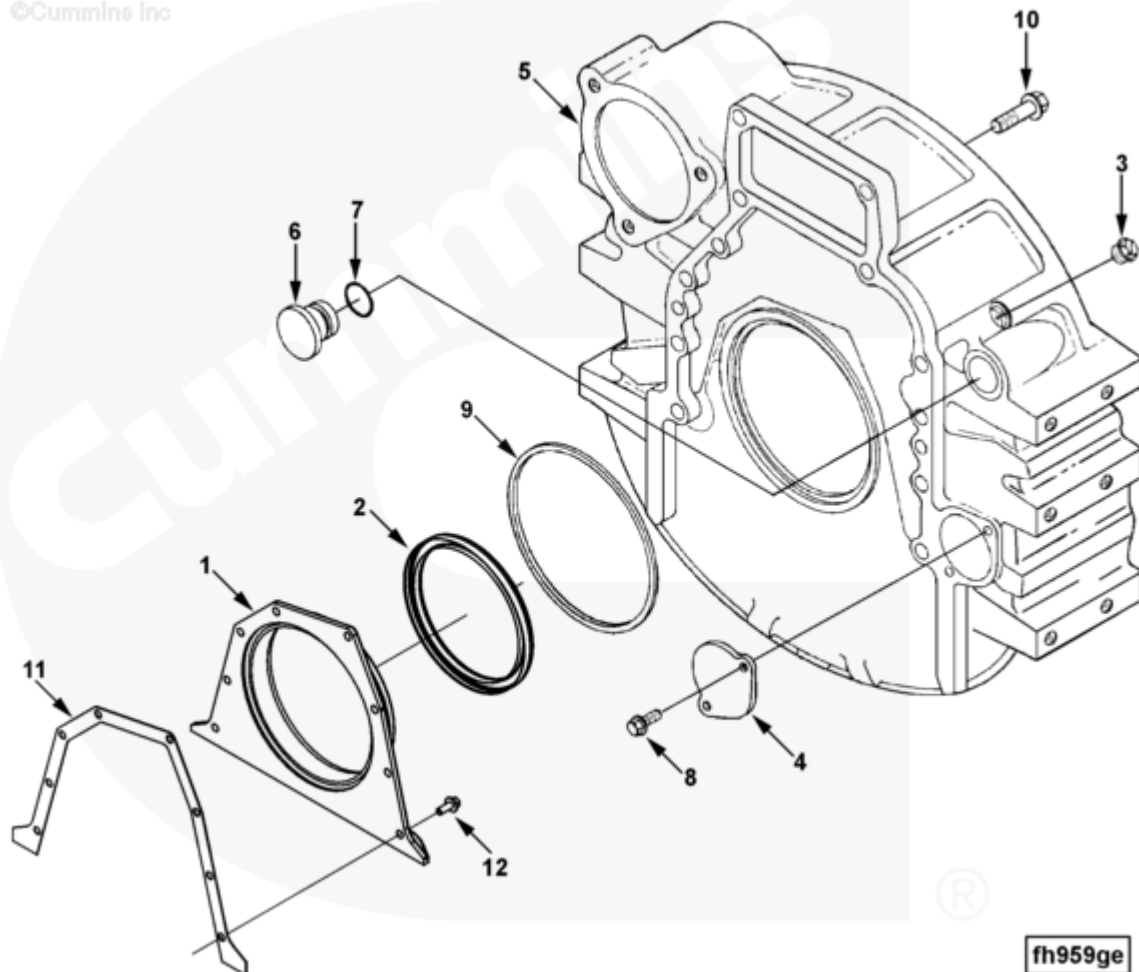




Parts Catalog - Option Detail

Electronic Parts Catalog - Option Detail				
Option	Group	Graphic	Film Card	Date
FH9349-04	16.01	fh959ge	Z	10-MAY-04
Engines	6C8.3, C GAS PLUS CM556, G8.3, G8.3 CM558, GTA8.3 CM558, ISC CM2150, ISC CM554, ISC CM850, ISC8.3 CM2250, ISC8.3 G CM2180 C101, ISL CM2150, ISL CM554, ISL CM850, ISL G CM2180, ISL8.9 CM2150 L110, ISL8.9 CM2880 L112, ISL9 CM2150 SN, ISL9 CM2250, ISL9 CM2350 L101, ISL9 CM2350 L111, ISLE4 CM850, L GAS PLUS CM556, L8.9, L8.9 L121, L8.9G CMOH2.0 L125B, L9 CM2350 L116B, L9 CM2350 L119B, L9 CM2350 L120C, L9 CM2350 L123B, L9.3 L105, L9.5 L117, L9N CM2380 L124B, QSC8.3 CM2250, QSC8.3 CM2880 C102, QSC8.3 CM554, QSC8.3 CM850(CM2850), QSL9 CM2250, QSL9 CM2250 L115, QSL9 CM2350 L102, QSL9 CM2350 L107, QSL9 CM2350 L118, QSL9 CM2350 L122, QSL9 CM554, QSL9 CM850(CM2850), QSL9 G CM558, QSL9 M CM2250 L106, QSL9.3 CM2880 L113			



fh959ge

[SMALL](#) | [MEDIUM](#) | [LARGE](#)

Cart	Ref No	Part Number	Part Description	Required	Remarks
<input type="button" value="View My Cart"/>					
		FH9349-04	Flywheel Housing		MR - HOUSING, FLYWHEEL...(More)

				Item Supplied: Flywheel
				Housing
				Flywheel Housing SAE Size: 2
				Clutch Type: Dry
				Starter Bore Position: 49
				Flywheel to Block Mounting
				Pattern: 12 x M12 x 1.75
				Starter Motor Flange SAE
				Type: SAE#3 3 Bolt 120
				Starter Pilot Bore Diameter
				(mm): 106
				Starter Bore Horizontal
				Distance (mm): 181.29
				Starter Bore Vertical
				Distance (mm): 157.59
				Starter Bore Center Distance
				(mm): 240.2
				Starter Bore Angle from
				Horizontal
				Centerline (deg): 41
				Angle to Starter Bore
				Mounting Hole
				Pattern: 42
				Starter Mounting Hole Thread
				Size: M12
				Starter Mounting Face Offset:
				0
				Rear Engine PTO Included: No
				Material: Aluminum 50010,
				50016

					Engine Mount Type: Pad
					Mounting Pad Hole
					Description: 6 x M12 x 1.75
					Mounting Pad Top Hole
					Location (mm): 104.78
					Mounting Pad Angle: 0
					Transmission Mounting Hole
					Thread/Count: 12 x M10 x 1.5
					Tachometer Drive Location
					Size: Quad 4, 3/4-16
					Tachometer Sensor Mounting
					Hole Count: 1
					Engine Family: C & L Series
<input type="checkbox"/>		3357700	Rear Cover	1	
<input type="checkbox"/>	1	3933384	Rear Cover	1	
<input type="checkbox"/>	2	3970548	Oil Seal	1	
<input type="checkbox"/>	3	3904181	Threaded Plug	1	3/4 - 16 UNF
<input type="checkbox"/>	4	3925234	Cover Plate	1	
<input type="checkbox"/>	5	3906689	Flywheel Housing	1	
<input type="checkbox"/>	6	3910248	O-Ring Plug	1	
<input type="checkbox"/>	7	3910260	O-Ring Seal	1	
<input type="checkbox"/>	8	3912072	Self Tapping Metal Screw	2	M8 x 1.25 x 15
<input type="checkbox"/>	9	3912473	Rectangular Ring Seal	1	
<input type="checkbox"/>	10	3920447	Hexagon Flange Head Cap Screw	12	M12 X 1.75 X 40.
<input type="checkbox"/>	11	3939353	Rear Cover Gasket	1	
<input type="checkbox"/>	12	3991306	Hexagon Flange Head Cap Screw	8	M8 x 1.25 x 15